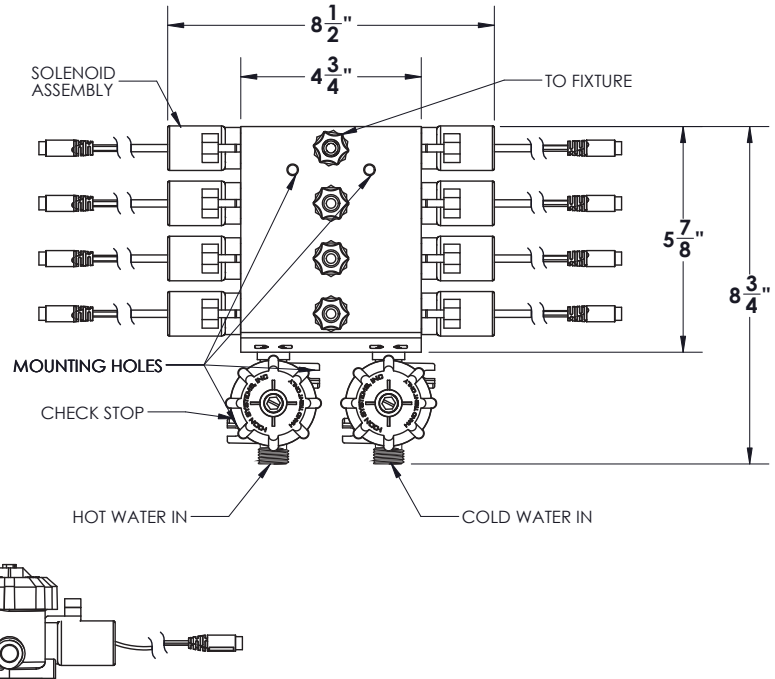
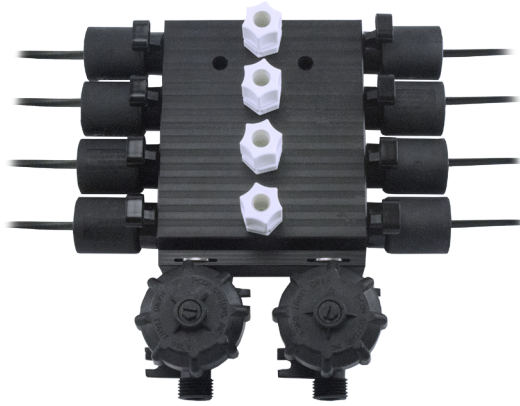


**ELEMENT® Hot and Cold Model
Electronic Manifold Lavatory Valve**

VLV-LAV-4830 Series



► **Description**

Lavatory manifold valve for use with hot and cold water. Up to four lavatories can be supplied by one unit. Includes new pressure compensating 0.5 GPM flow regulators as standard.

► **Number of hot and cold lavatories** (choose one)

- One lavatory
- Two lavatories
- Four lavatories

► **Solenoid Power** (choose one)

- 24 Volts AC
- 9 Volts DC (Battery Operated)

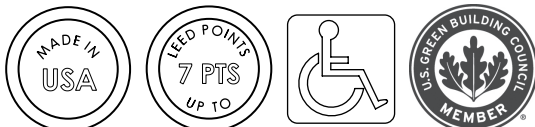
► **Accessories**

For additional accessories, see the Accessories Section of the I-CON catalog or contact our Customer Service Team for details.

Specifications

- New pressure compensating 0.5 GPM flow regulators as standard
- New check stop retaining clips for added support and reliability
- Expandable valve solution allowing for one (1) hot and cold water supply for up to four (4) lavatories
- No metering diaphragms to fail and clog
- Engineered non-metallic polymer valve body for advanced corrosion resistance
- Ability to activate using manual by-pass handle
- All solenoids are interchangeable with other I-CON valves reducing spare parts
- Positive valve shut-off after pressure loss eliminating continual running of valve
- Maximum water temperature of 120 degrees F and maximum pressure of 100 PSI
- 1/2" NPT supply connections and 3/8" OD tubing outlet

This space is for Architect/Engineer approval



The information contained in this document is subject to change without notice.